



MXT 840

Construction **telehandlers**



Handling your world

The Manitou group is a global market leader in rough-terrain material handling. It designs, manufactures, distributes and services equipment for the construction, agriculture and industry sectors.

The Group's product ranges include rough-terrain fixed, rotating and heavy-duty telehandlers, rough-terrain, semi-industrial and industrial forklift trucks, wheeled or tracked skid steers, articulated loaders, backhoe loaders, aerial work platforms, truck-mounted forklifts, warehousing equipment and attachments.

Through its iconic brands – Manitou, Gehl and Mustang by Manitou – and its worldwide network of 1,500 dealers, the Group offers the best solutions to create optimum value for its customers.

With its registered office in France, in 2018 the group recorded revenue of 1.9 billion euros in 140 countries, and employs 4,400 people, all committed to delivering customer satisfaction.



1958

Marcel Braud conceives the idea of the Manitou truck.

1972

The Group enters foreign markets.

Sales partnership agreement signed with Toyota for exclusive distribution of Toyota industrial forklift trucks in France.

1981

Launch of first Manitou telehandler.

1984

Manitou floated on stock exchange.

1993

First MRT rotating telehandlers are sold.

1995

Launch of first range of aerial work platforms.

1996

ISO 9001 certification obtained.

1998

Marcel Braud becomes Chairman of the Supervisory Board.

2007

Manitou opens an international logistics centre spanning 22,000 m².



GROUP LISTED ON THE
PARIS STOCK EXCHANGE

3 brands
distributed by
1,500 dealers
in 140 countries

MANITOU

GEHL

MUSTANG
BY **MANITOU**

- 28 companies
- 11 production facilities
- 4,400 employees
- 80% of revenue comes from foreign markets
- Revenue of 1.9 billion euros in 2018

2008

Takeover of
the American
company Gehl.

2009

Change of
management
and a return
to a Board of
Directors.

2010

Launch of Gehl
and Mustang
articulated
loaders.

2012

Crossover
agreement signed
with Yanmar for
the manufacture
and distribution of
mini-excavators.

2013

Consolidation of
Yanmar partnership
as Yanmar
becomes a Group
shareholder,
with 6.26 % of
the capital.

2014

January: Michel
Denis appointed
President and CEO.
April: A new roadmap
is drawn up focusing
on the three divisions,
including one for
services.

2015

Manitou
celebrates the
sale of its 500,000th
machine
worldwide.



2016

Launch of the
new MLT range,
NewAg rotating
telehandlers for
agriculture.

NEWAG

2017

Inauguration of the
new entity, Manitou
Equipment India,
specialising in
compact loaders
and backhoe
loaders.

What is a Manitou telehandlers?

Manitou telehandlers are handling equipment perfectly adapted to work in the most difficult conditions and terrains. Equipped with a telescopic boom, they will save you time on a daily basis when handling all types of loads in height and outreach.

Versatile and true tool carriers, they allow a wide variety of attachments to be used in a simple, fast and safe way for the operator and his working environment.

The Manitou brand also offers a wide range of services and attachments to support you throughout the life cycle of your machine.



Move Loads in All Conditions

The telescopic arm passes above obstacles and enables you to move your load safely. It also allows you to move suspended loads using an assortment of jibs, cranes and winches.

Place the load where you want to.

The MTX 840 can place loads up to 4 tons at a height of up to 7,6 meters with an outreach of up to 4.20 meters.

Scoop & dump

Our bucket and concrete skip attachments allow you to scoop up and dump various types of content easily.

Loading & Unloading Trucks and Containers

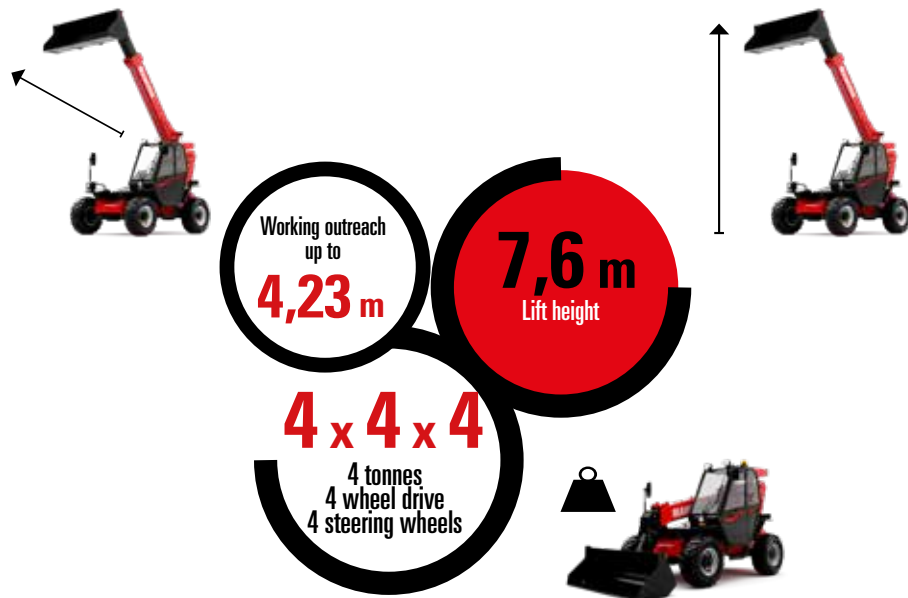
Carry out operations quickly on many terrains that require substantial maneuverability.

Preparing and Cleaning the Ground

The drawbar pull and breakout force of the MXT 840 means it can be used to level the ground and clear excess soil and waste.

Versatility

When matched with one of our many available attachments, the MXT 840 will satisfy your construction and job sites handling needs.



*"With the help of my Manitou, I only need one machine to
make a multitude of applications on a daily basis.
It's a real toolbox! »*



INCREASED VERSATILITY

The MXT 840 is a genuine tool holder. It comes with a large selection of attachments that offer users precisely the kind of versatility needed on a work site. The Manitou fork carriage enables you to change your attachment in just a few seconds. .

Attachments designed and approved by Manitou

As a manufacturer of machines and attachments, Manitou is ideally suited to deliver unmatched performance and productivity when our products are used together.



TFF
Floating fork carriage



CBR
Re-handling bucket



CBC
Construction bucket



CB 4x1
4-in-1 bucket



PC 50
Frame mounted hook



P 4000
Crane jib



P 600
Extension jib



HBB
Big Bag handler



BB 500
Concrete skip



GL 400 / GL 600
Distributor bucket

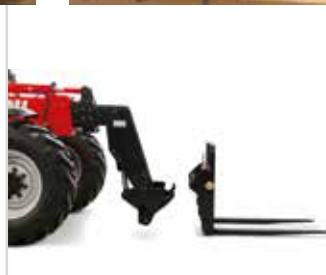
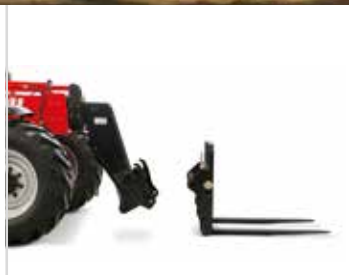


NE 100
Platform basket



A Simple and Proven Coupling System

The Manitou fork carriage can easily change
your attachment in just a few seconds.



DESIGNED FOR PERFORMANCE

A Maneuverable All-Terrain Machine

The MXT 840 has been designed to work well in all types of conditions and terrain.

A turning circle of just 3.9 meters combined with 4 steering wheels saves you time. No need for three-point turns to get around the construction site.

Four-wheel drive and excellent drawbar pull allow you to negotiate all types of surfaces and slopes with an gradient up to 47%.

A substantial ground clearance of 38 cm allows you to work in all weather conditions (rain, snow, etc.) offering improved gradeability.

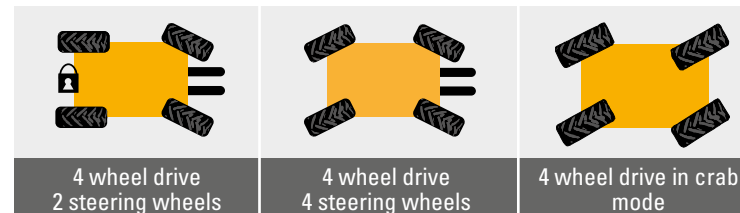
An oscillating rear axle ensures excellent stability and traction for the operator.

A longitudinal stability indicator gives the operator information about outreach and lifting height capabilities, which helps the operator use the machine safely.





An ultra-manageable machine **with three steering modes**



- 2 front steering wheels for greater safety on the road.
- 4 steering wheels for manoeuvring easily in all circumstances.
- Crab mode for sideways approaches and tricky unloading maneuvers.



An Adaptive Transmission Releases the Full Power

This type of transmission increases the drawbar pull of the machine, which provides optimum handling for work that requires a lot of torque. Combined with a four-speed gearbox (front/rear), it optimizes moving speed and tractive effort depending on the work to be done.



EFFICIENCY AND PRODUCTIVITY GUARANTEED

Simplicity, driver of productivity

2 front steering wheels for excellent steering
for greater safety on the road
Very quick and easy to use



Lifting/lowering of the boom, telescopic boom
extension and retraction, scooping/tipping,
attachment hydraulic line
Dashboard & levers easy to use
Start-up in less than 30 seconds

Safe cabin

The MXT 840 cab meets the level 2 FOPS/
ROPS standards. It is capable of supporting
the machine rollover and protecting the
operator from falling objects.





Easy access cabin

- Grab handle to access the cab
- Non-slip steps
- Helps to reduce operator fatigue and avoid falls

Optimal lighting

A machine fitted out for working in the dark:

Full lighting

1 rotating beacon light (optional)

4 working lights on cab (optional)

Rear license plate light (optional)

STRENGTH & PROFITABILITY

Designed to last

- Mudguard and cab interior made of sturdy metal, easy to clean
- Well known and reliable part suppliers (Dana Axles, Perkins and Kirloskar engines, etc.)
- Oil-bathed multi-disc brakes in the axles
- Cab meets level 2 ROPS/FOPS standard





Simple and efficient maintenance

The machine has been designed to enable easy access to the various maintenance elements

- Wide opening engine cover
- Brake fluid fill level displayed on the dashboard
- Accessible lubrication points
- Fuel tank and battery isolator switch remain accessible with the engine cover closed



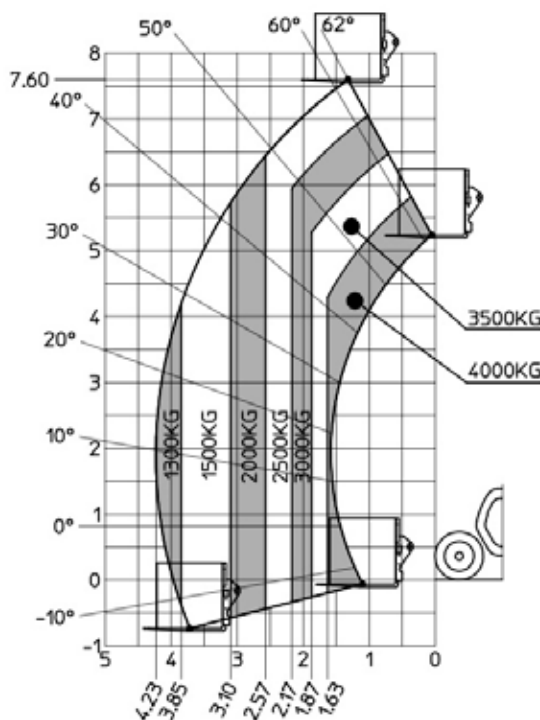
Telehandler

Standard & options
S - Standard / O - Options / - not available



MXT 840

Transmission		Torque Converter	
Engin Powep	ch	96	94
Engin brand		Kirloskar	Perkins
Max. capacity	m	4000	4000
Max. lifting height	m	7,60	7,60
Max. reach	kg	4,23	4,23
Steering wheels / Driving wheels		4/4	4/4
Overall length of fork carriage	m	4,93	4,93
Frame outer turning radius	m	3,90	3,90
Ground clearance	m	0,38	0,38
Unladen weight (with forks)	kg	8115	8140
Hydraulic flow rate	l/min	86	86



	KIRLOSKAR	PERKINS
Engine		
Kirloskar engine - 96 hp	S	-
Perkins engine - 94 hp	-	S
Cabin		
Closed cab - FOPS/ROPS - No air	S	S
Closed cab - FOPS/ROPS - Heating	-	O
Closed cab - FOPS/ROPS - AC	O	O
Closed cab - FOPS/ROPS - Heating/AC	-	O
Cabin fan	O	O
Front and rear windscreen wipers	S	S
Internal rear-view mirror	O	O
Protective windscreen grille	O	O
Wheel alignment indicator (front and rear)	S	S
Left-hand and right-hand wing mirrors	S	S
Fixed steering column	S	S
Vinyl seat - mechanical suspension	S	S
Fabric seat - mechanical suspension	O	O
Car radio	O	O
Lights		
Rotating beacon light	O	O
Driving lights (front, rear, cornering, reverse, braking)	S	O
Number plate light	O	S
Front working lights	O	O
Rear working lights	O	O
Safety		
Simple hydraulic movement cut-off	S	S
Aggravating movements hydraulic stability cut-off	O	O
Battery cut-off	S	S
Seat sensor	S	S
Safety wedge for the lifting cylinder	S	S
Boom and interfaces		
Hydraulic line on the boom head with rapid coupling	O	O
Rear hook	O	O
Rear hook with mirror	O	O
General options		
Hydraulic oil cooler	O*	S
Tool kit	S	S
Cyclonic pre-filter	S	S
Specifications for cold weather countries		
Cold fuel	-	O
High capacity battery	-	O
Engine block heater	-	O
Tyres		
BKT 16/70-20 EM936 tubeless	S	S

O* standard with hydraulic line on the boom head

**Do you know
the real cost of
ownership
of your equipment?**

REDUCE TCO
(Total Cost of Ownership)
gives you detailed
information about the breakdown
of cost items for your
machine and helps you
to optimize the profitability of
your production tool.

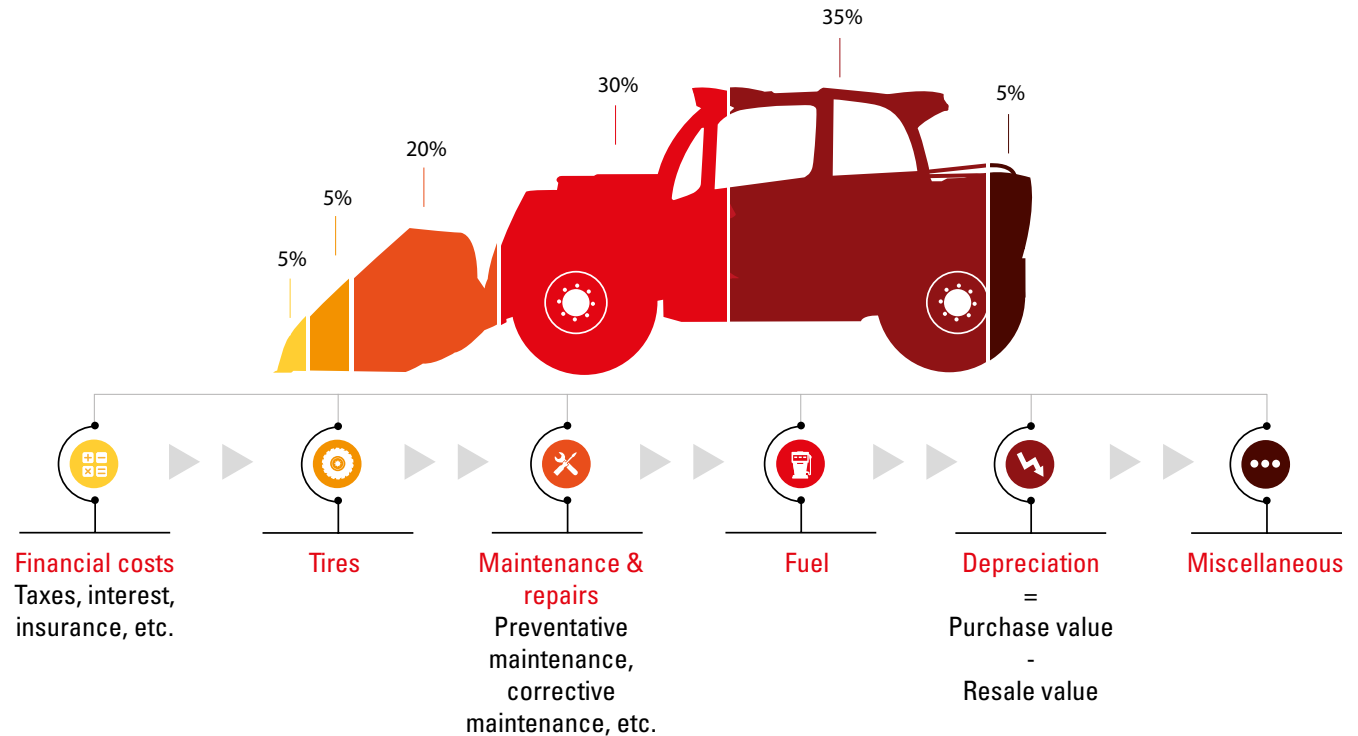
Calculate your TCO on
tco.manitou.com

What does **TCO** stand for?

The **TCO** is the **total cost of ownership** of an asset, more commonly known as the running cost.

This indicator considers both fixed costs, such as acquisition, interest, rent, and residual value, but also all variable costs linked to using your machine, such as maintenance, user training, etc.

Manitou takes reduction of TCO of its machines into account right from the design stage, to ensure that your running costs are optimised.



Your dealer:



Head office

B.P. 249 - 430 rue de l'Aubinière - 44158 Ancenis Cedex - France

Tel.: 00 33 (0)2 40 09 10 11 - Fax: 00 33 (0)2 40 09 10 97



This publication provides the description of the versions and configuration possibilities of Manitou products, which may differ in terms of equipment. The equipment presented in this brochure may be available as part of a series, available as an option, or not available, depending on the versions. Manitou reserves the right, at any time and without notice, to amend the specifications described and represented. The specifications provided do not bind the manufacturer. For more details, please contact your Manitou agent. This is not a contractually binding document. The presentation of the products is not contractually binding. The list of specifications is non-exhaustive. The logos and visual identity of the company are the property of Manitou and cannot be used without authorisation. All rights are reserved. The photos and diagrams in this brochure are only provided for consultation and information purposes. Manitou BF SA - Limited company with board of directors. Share capital: 39,547,824 euros - 857 802 508 RCS Nantes